



# Ilwaco Captain's Packet

Welcome to Ilwaco Washington – Port Captain Dean Ferguson

## Friday July 30th pre-game meetings

5-6 PM—Registration @ OTC Tent located across from the Marina

6 PM—Mandatory Captains Meeting @ the OTC Tent at 6 PM. Attendance by one team member is required.

5-8—Social party in the OTC Tent, concurrent with the check in and the Captains meeting.

There is no dinner served Friday evening but there is a no host bar.

No outside alcoholic beverages are allowed, nor can any be removed from the tent.

## Tides: @ The Columbia Bar (Jetty A)

Friday July 30th—Sunrise 5:56 AM, Sunset 8:49

AM High, 3:36 AM, 6.9' AM Low 9:29 0.1'

PM High, 4:17 PM, 7.3. PM Low 10:06 1.5'

Saturday July 31st—Sunrise 5:57 AM, Sunset 8:48

AM High, 4:17 AM, 6.4' AM Low 9:57 0.7'

PM High, 4:42 PM, 7.4. PM Low 10:47 1.3'

Sunday August 1st—Sunrise 5:58 AM, Sunset 8:46

AM High, 5:05 AM, 5.8' AM Low 10:28 1.3'

PM High, 5:12 PM, 7.5. PM Low 11:36 1.2'

## 2009 Results from OTC Ilwaco

1st place: Team Defiance 117.55#, 2nd place: Team Bad to the Bone 111.45#. 3rd place: Team Engage 108.65#. 4th place Team Roadbuilder, 105.45#. 5th place Team Most Excellent, 105.10#. Team Engage, 2010 OTC Newport winner is based out of Ilwaco and placed in 2 of the last 3 tournaments they fished (1st and 3rd).

Longest Fish: Team Bad to the Bone. Megan Waltosz. 34" caught on a butterfly jig

No Pelagic Fish pot was awarded.

Ilwaco OTC total fish weight donated to the food bank, 2009, 4850# by 54 teams and extra fish donated took the total to approximately 6000#, 2008—4264#, by 56 teams,

70 teams were on the starting line at the flare shoot in 2009. Currently, 80 teams are registered for 2010.

**Ilwaco Port  
Sponsor:**



OREGON CLINIC—HERNIA CENTER

- ◆ Registration Date  
Last day—July 25th
- ◆ Saturday July 31st  
6 AM shotgun start  
4 PM finish  
7 PM Dinner

# 2010

TOURNAMENT SERIES

BROUGHT TO YOU BY:

RON BROCKMANN



Inside the Captain's Packet

Pre trip Logistics	2
Facilities Map	3
IFGA Points	4
Marina Map	5
CR Bar & Ilwaco	6
Check in & VHF use	7
Start & Finish Lines	7-8
Weigh In/Dinner	9
Tourney Rules	10-11
Release/Waiver	12
Contact list/Sponsors	13-14



**“Since 2005,  
over 44,300#  
of tuna and  
\$103,000 has  
been donated to  
Oregon Food  
Banks”**

## **Ilwaco Captain's Packet**

### **Moorage**

Moorage should be arranged by contacting the Port of Ilwaco at the soonest possible convenience. There are good moorage options at Ilwaco, Astoria and Hammond. See port map for marina layout. 360-642-2400.

Moorage fees paid for with cash or check (Port of Ilwaco only), will be donated directly to the Food Bank. Please try to take advantage of this generous offer by the Port of Ilwaco. Make checks out to the Ilwaco Food Bank.

Ilwaco moorage fees are as follows: 21'-40', \$15. 41'-50', \$20 per night. Includes power and water.

### **Fuel**

Fuel resources on the water are limited to the Ilwaco fuel dock, or Astoria West Basin. They both have diesel and EO fuel.

Ilwaco fuel dock, 360-244-1441. Normally open until 5 pm on Fridays. They will not be open Saturday morning.

Astoria West Basin Fuel Dock, 503-791-7731, Hours are limited, call ahead.

### **Ilwaco Channel Etiquette**

Stay between the channel markers, keep a safe speed and please dim your deck lights to preserve the night vision of boats behind you.

### **Lodging**

There are lots of options for lodging in Ilwaco, go to [www.funbeach.com](http://www.funbeach.com) or contact them by phone at 800-451-2542. There are several RV parks in the area as well, that information is accessible from the above mentioned website.

### **Launch Facilities**

Ilwaco has a two lane boat ramp located in the marina basin. It has 2 ramps and docks for launching and recovering your vessels. See map for launch location. \$5 launch fee. Hammond, Warrenton and the Astoria East Basin also have launch ramps in Oregon. Chinook Marina and Cape Disappointment also have launch facilities on the Washington side. Ilwaco, Chinook and Hammond are the most feasible launches for typical tuna boats.

### **Ice**

There is a 100 # ice allotment for each team and it will be closely monitored. Tournament Ice is available at the location shown on the marina map, on the way to the Ilwaco launch ramp. Other local ice supplies are limited.

### **Licenses**

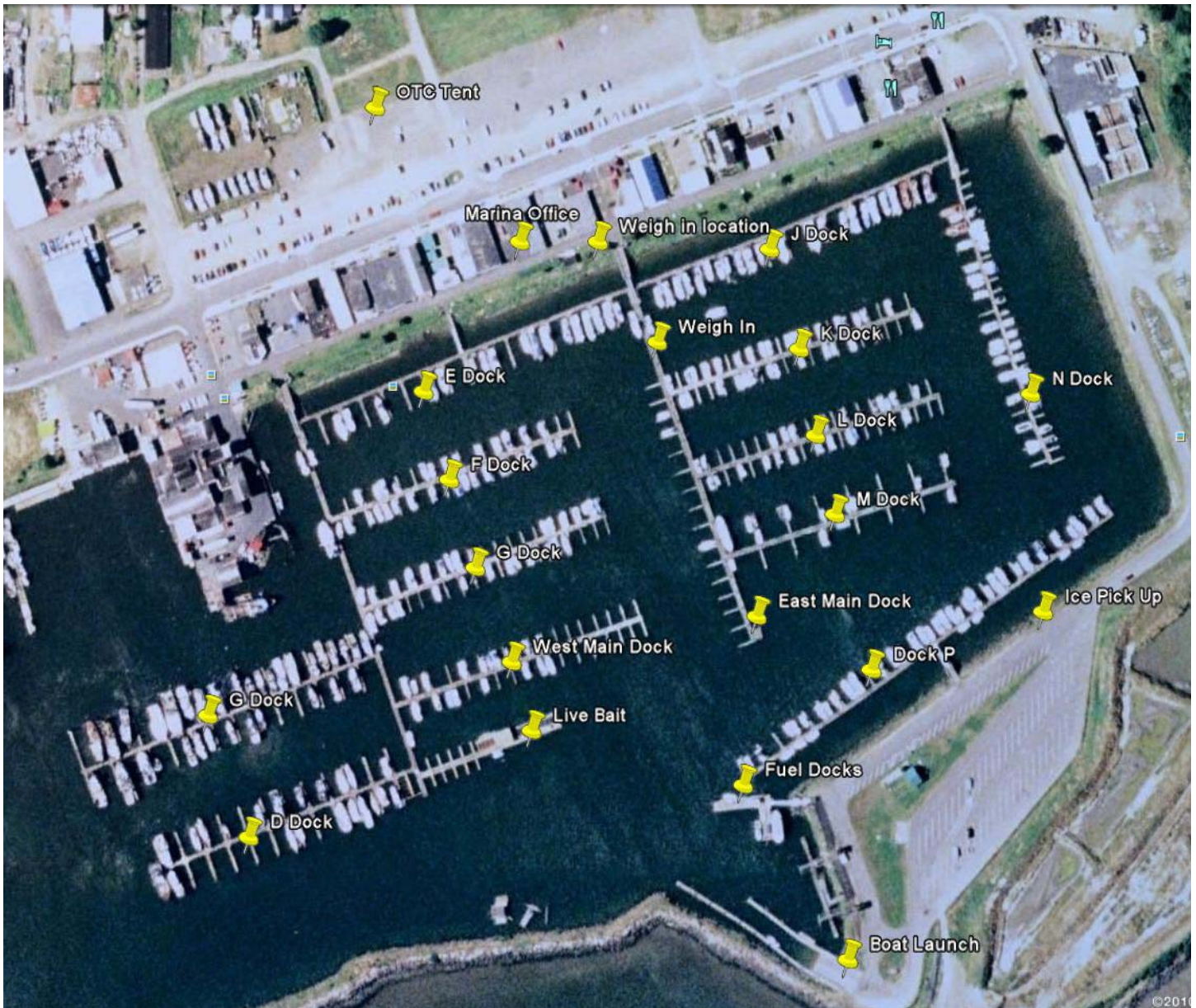
An Oregon or Washington fishing license is required for this event. One day permits are available at various retail locations. IMPORTANT note about trailering: Washington *does not require an Invasive Species permit*, but if you encounter an invasive species inspection station, ***YOU ARE REQUIRED TO STOP IN WASHINGTON.*** If fishing a charter boat out of Oregon, you cannot land people in Washington, but your 5 fish can be landed.

### **Live Bait**

Live bait is available from Columbia River Bait Co. It is available Friday Night, or Saturday morning. \$25 per scoop and tips are appreciated. They are located on water, at the end of the West Main Dock. You can't miss them, it's the busiest place in port Saturday morning. Give yourself plenty of time, have your livewell full and ready to receive a 5# bucket and depart quickly. Minimize the deck light usage here too please.



## The Playground



### Food & Shopping

There are several smaller stores in Chinook and Ilwaco, with a larger full service grocery store up the road a few miles in Long Beach.

Numerous restaurants and shops are located on the boardwalk, adjacent to the marina. Please take advantage of the hospitality and frequent these facilities.



# DEFIANCE

The largest Albacore landed in an OTC event this year, was 26.5# (Team Time Out), the smallest, 13.9# (Team Albie Damned).



## IGFA qualifying event

The Oregon Tuna Classic has been classified as an IGFA Offshore World Championship Qualifying event. Through the use of a point system, at the end of season Garibaldi awards ceremony, the OTC will award a team with an official invitation to participate the 2011 IGFA Offshore World Championships in Cabo San Lucas, Mexico.

The points system is consistent with the 2009 power rankings developed by the OTC staff. They will work as follows:

- 1) Only one team per boat is allowed to garner points towards the IGFA invitation.
- 2) The actual weight of the fish is not taken into consideration, only the team ranking in each event fished.
- 3) Teams are not irreversibly penalized for NOT fishing all 4 events.
- 4) Teams are rewarded points for fishing all 4 events.
- 5) System does not allow a team to fish 1 event and finish in the top 10, but allows a team to fish 2 events and finish #1.

Points awarded per fishing event:

1st place = 150 points

2nd-11th place—140 points for 2nd, and each consecutive place receiving 10 less points for each lower place. 3rd = 130, 4th = 120...11th = 50

12th-15th place— each consecutive place receiving 5 less points for each lower place. 12th = 45, 15th = 30

16th-20th place— each consecutive place receiving 2 less points for each lower place. 16th = 28, 20th = 20

21th-39th place— each consecutive place receiving 1 less point for each lower place. 21st = 19, 39th = 1

40th place and lower—1 point will be awarded to each team which weighs in fish

Bonus Points—

Any team entering a Pelagic Pot and catching a designated Pelagic species will be awarded 5 bonus points, regardless if the fish wins the Pelagic Pot.

Any team entering the Big Fish Pot and catching the winning fish will be awarded 10 bonus points.

\*The winning team will be invited, at their own expense, to fish the 2011 IGFA Offshore World Championship.

\* Fish only need to be landed in accordance with Oregon or Washington State fishing regulations. The OTC is exempt from IGFA restrictions on tackle and gear, however any fish landed for a World Record, would still require IGFA rules be followed to the letter in order to be considered.

## Pelagic Fish and Big Fish Side Pots

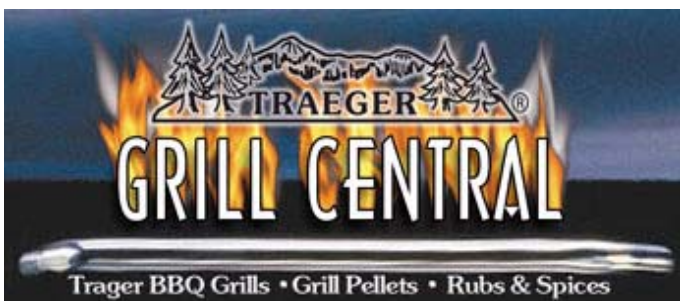
Each port will have a Pelagic and Largest Fish side pot that can be entered when you check in at the Friday Captains meeting. Entry is \$50 per boat for EACH side pot entry.

Largest Fish is awarded based on the total weight. 50% of the total Largest fish side pot entry fees will be paid to the winning team.

Pelagic Fish is defined as Blue Fin Tuna, Big Eye Tuna, Yellow Fin Tuna, Yellowtail Jack, Marlin or Swordfish.... **NO SHARKS.** 50% of the total Pelagic fish side pot entry fees will be paid to the winning team. If no Pelagic fish are turned in by the official finish, no payouts will be made.

## Media

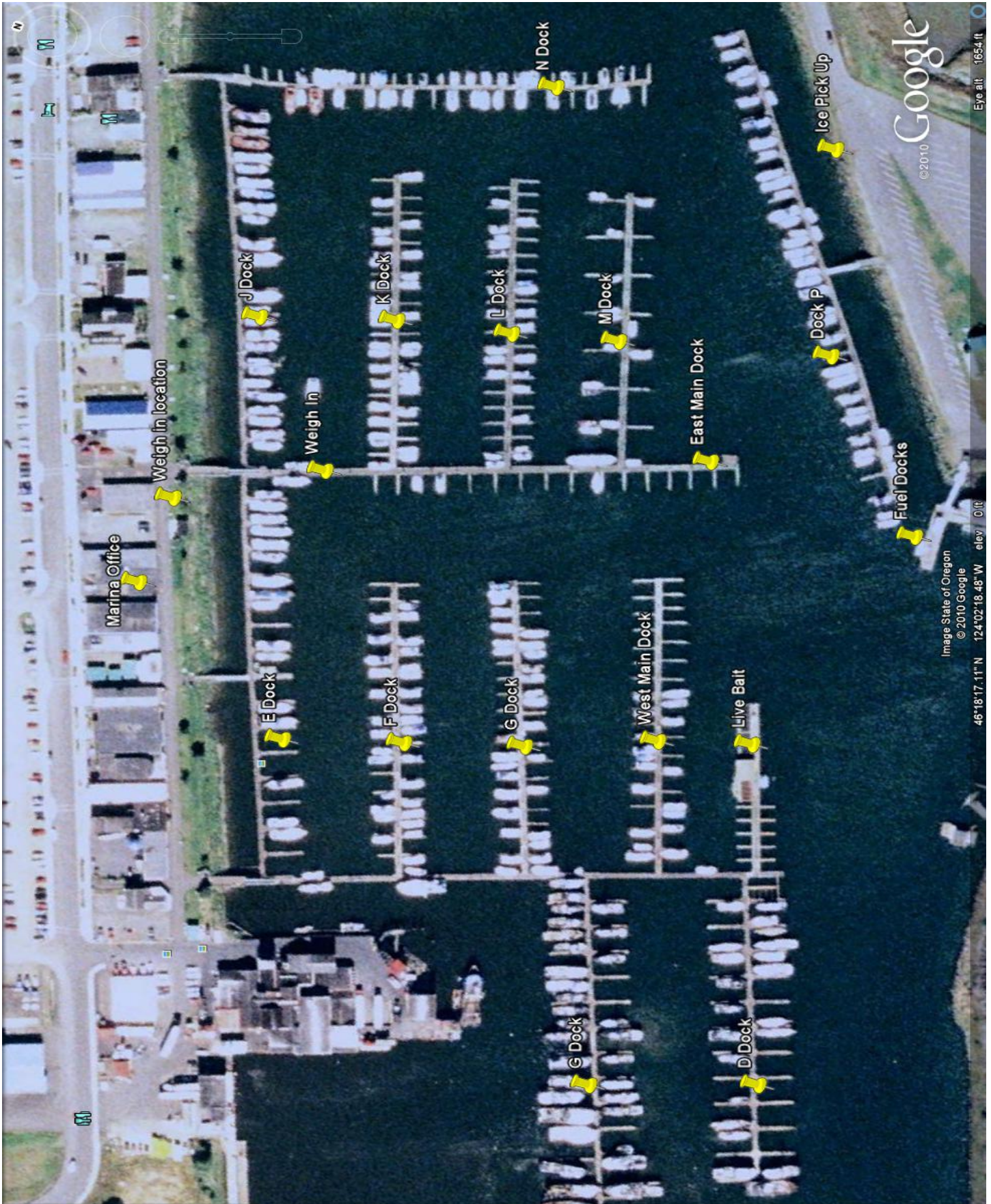
ESPN Outdoor Line Radio Show will not be broadcasting live from the Ilwaco OTC, as they are fishing the event.



**There are only 80 IGFA qualifying tournneys worldwide, and the OTC is the only west coast qualifier.**



# The Marina



### Ilwaco Channel & Columbia Bar

The chart to the right shows the narrow channel at Ilwaco. Stay between the red and green cans to remain in the channel, do not cut corners.

There are unlit Red and Green cans at the entrance to the Ilwaco channel, it is a very narrow entrance.

Once out of the Ilwaco entrance, it is suggested that you safely cross the shipping channel towards buoy 12 and proceed across the bar near the "red line", or the red ATONs marking the south side of the shipping channel.

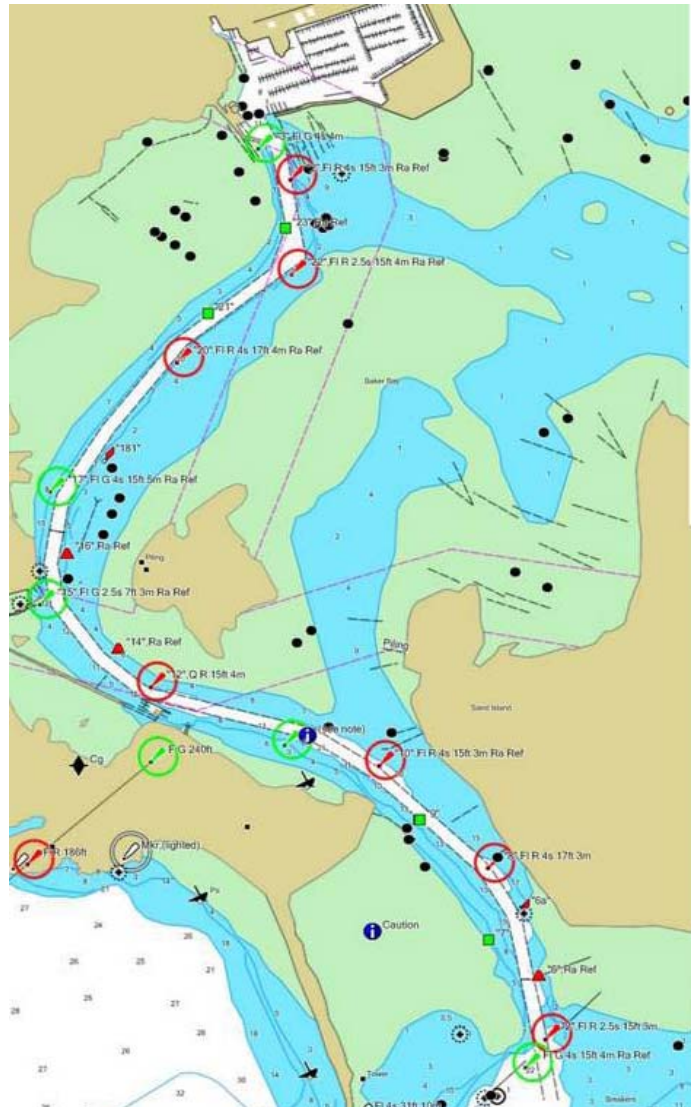
Departing the channel, you can turn south at buoy 6 into the staging area.

The Columbia Bar is an extremely dangerous bar crossing. Most boats will be crossing around 5:30 AM, about an hour into the ebb tide. The exchange Saturday is 5.7'.

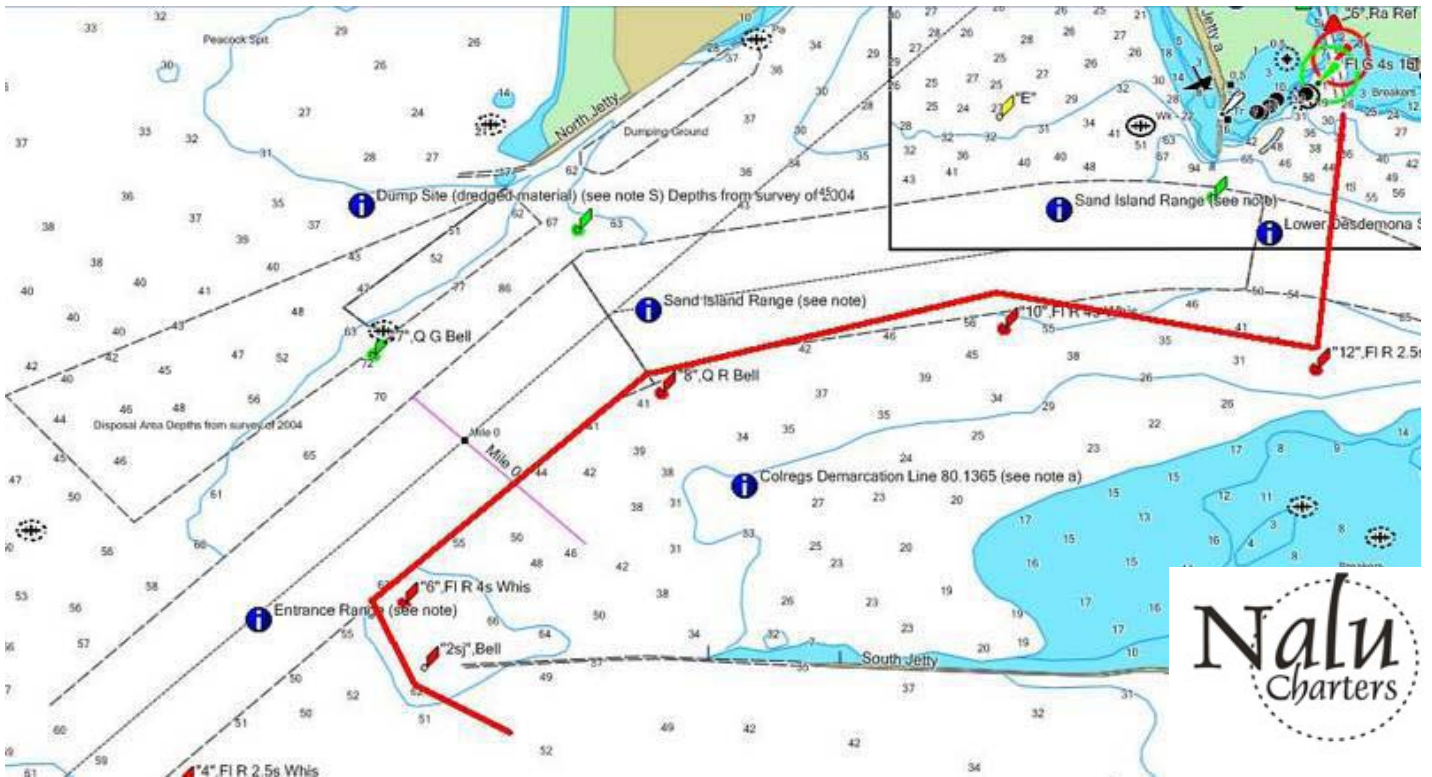
It is recommended that all anglers wear PFDs when crossing the bar and for the duration of the fishing portion of the event.

Captains are urged to use caution at all times for commercial traffic, difficult bar conditions, and other navigation hazards. This is an extremely busy corridor.

Watch for breakers south of the red line, from buoy 8 and upriver. Avoid that area.



Rogue Brewery—Astoria East Mooring Basin Bar & Restaurant. The only place to enjoy a Dead Guy!





**Communications**

Roll Call & Start—Channel 69 — The official VHF channel being used for this port. Roll call will start on channel 69 at 5:15 AM. *Please limit radio chatter during the check in and in advance of the start.*

Check In—Channel 69

Weigh In—Channel 71, to be used only for weigh in purposes only.

Safety—Channel 16

Bar Reports—Channel 22a

**Starting Location—6 AM Start—Red Flares & Radio Broadcast**

The North line is Buoy 2SJ, which is located on the WEST line: 124:05.8 The line runs south approximately 1/4 mile. Be sure to be south and east of the 2SJ Buoy at the 6 AM start.

Watch for commercial traffic at all times!



**Finish Line & Check In**

See the map on the following page for the finish line. Note there are two no wake zones before the finish line, also shown on the following map. Tournament control will be located at the Cape Disappointment boat launch to visually verify you are across the line prior to **4 PM**, and they have GOOD EYES, Trust Me. On channel 69, state your Team Number only as "checking in" and await confirmation.

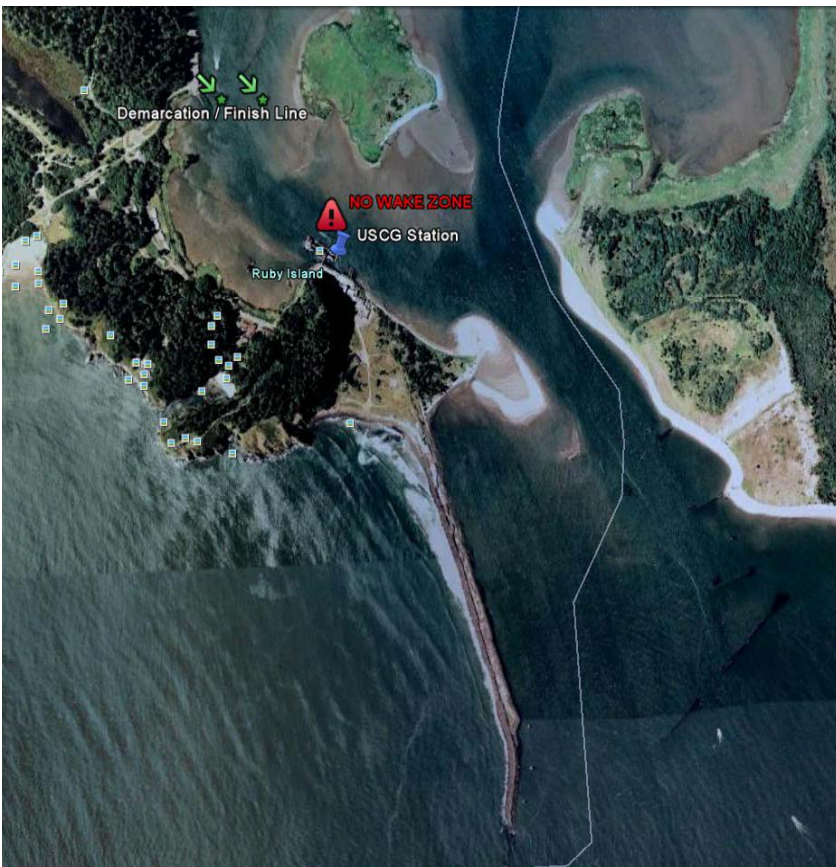
AFTER you have crossed the finish line (tip of the break wall at Cape Disappointment Boat Launch) and have checked in for the finish, switch to channel 71 to get in line for weigh in. State your Team NUMBER and "weighing in". You may be asked to show your Team number placard at this time. Await confirmation on channel 71 and then wait to be called into the offloading station at the East Main Dock (see map)



Finish Line / Check in / No Wake Zones



No Wakes Zones are present adjacent to the Ilwaco USCG station and by the Cape Disappointment Boat ramp. See Inset map to the right.



Check in on channel 69 ONLY after crossing the Demarcation line at the tip of the Cape Disappointment Boat Launch. 4 PM cut off time.

After checking in, switch to channel 71 for weigh in instructions and slowly make your way inside the port of Ilwaco. Hold outside the offloading until called in by tournament control.





## **Weigh In Procedures— 2-4 PM**

After checking in, slowly make your way inside the port. Contact weigh in control on channel 71, proceed to the weigh in area only after being called in by weigh in control. Weigh In is being completed at the east main dock as shown on the marina map.

Please watch your wakes in all areas of the marina.

You are to land your 5 largest fish for the tournament. They should be weighed & sorted prior to docking. All fish MUST be offloaded here, no hand carried fish are allowed. If you wish to donate more than five fish, they will be accepted for donation at this time or until 5 PM.

Your fish will be tagged as they are offloaded and at least one of your Team Members will escort your fish to the scales and collect a receipt.

Immediately clear your vessel from the offloading area and return to your slip or the launch.

## **Dinner & Awards**

The post tournament dinner will begin at 7 PM at the main OTC tent. Each team's Captain's Bucket is provided with 4 meal tickets, 4 raffle tickets, and 8 drink tickets. You will need your meal ticket for admittance to the food line. Additional meal tickets can be purchased for \$20 each.



## **Fish Cleaning Stations & Fish Processing**

There are NO fish cleaning stations at Ilwaco, but there is one at the Cape Disappointment State Park. You are allowed to cark fish at sea in the State of Washington. Please do not throw fish carcasses into the bay.

You may donate ALL of your catch to the OTC at weigh in if you wish, and it will be cleaned and distributed to the food banks. This is encouraged, but not required.

There are 3 processors in Ilwaco who will filet, package, freeze, and ship your tuna, they are:

DieBobs—360-642-4332

Pacific Salmon Charters— 360-642-3466

Sportsman Cannery- 360-642-3340

## **Boat Services—Parts-Guess what we broke!**

NAPA Auto Supply/ Astoria — 503-325-2411

McCall's Tires / Warrenton—503-861-3252

Englunds Marine Supply / Astoria - 503-325-4341

# OREGON TUNA CLASSIC 2010 TOURNAMENT RULES



## RULES ACKNOWLEDGEMENT

It is the sole responsibility of the participating Captain, crew and angler(s) to obtain a copy, read, know, understand and abide by the tournament's rules, including but not limited to, any final instructions that may be announced during the captains meetings. Rules are subject to change. By entering the events(s) all participants agree to accept the rules of the tournaments and accept all decisions made by the Executive Committee of The Oregon Tuna Classic.

### 1. CAPTAINS MEETING(S)

One registered team member MUST attend the captains meeting for registration and to be present for the safety briefing. It is recommended that the Captain and all crew members attend the Captains meeting. If they do not attend, they automatically accept and agree to be bound by the instructions given at the meeting. All anglers including the Captain must sign and return a Liability Waiver prior to participating in any event. One Liability Waiver is all that is needed for the tournament season.

### 2. PERMITS AND LICENSES

All participating anglers must obtain and be in possession of a valid personal fishing license and comply with all Federal, State and local laws as it pertains to size limits, bag limits and any other regulations that may apply.

### 3. TOURNAMENT START OFFICIAL CLOCK

Each event start time will be determined at the Captains meetings. The official start is a shot gun type flare start which will be shot from a United States Coast Guard vessel or another official boat which will be determined at the Captains meeting. The location of each starting and ending line can be found on the web site [www.oregontunaclassic.org/tournaments](http://www.oregontunaclassic.org/tournaments) and will also be confirmed at each captains meeting. All boats must be present 30 minutes prior to the start and must acknowledge their team when roll call is done. Roll call will start 45 minutes prior to the shot gun start. Any team that does not acknowledge when called will not be allowed to participate in the event. **In the event that it is determined that the flare start is not feasible due to weather conditions such as fog, the official start will be relayed by Tournament Control via the assigned VHF channel.** Each team must be across the pre determined finish line by 4:00pm. The Executive Committee reserves the right to change and or cancel a starting time and ending time the morning of each event if in its discretion there is a possible threat of safety due to weather, ocean conditions or anything they deem to be dangerous.

### 4. TOURNAMENT COMMUNICATIONS

The official VHF frequency will be determined at each Captains meeting. This will be used as the means for morning roll call prior to the shot gun start. It is recommended that all teams monitor the USCG frequency as well as any specific frequency that will assure the best means of safety from other sport and commercial vessels.

### 5. WEATHER AND CANCELANATION

Due to the nature of our ocean and the dangers that potentially exist, the Executive Committee of The Oregon Tuna Classic (OTC) reserves the right to cancel any event it deems unsafe, or for any other reason the Executive Committee deems necessary. There will be no refunds of entry fees. In the event of a cancellation due to rough ocean conditions the OTC will make the announcement via [www.oregontunaclassic.org](http://www.oregontunaclassic.org) and [www.ifish.net](http://www.ifish.net) after the 2:30pm local NOAA update weather for ocean conditions broadcast on Thursday prior to the event. **Only the fishing portion of the event will be canceled. The remainder of the event will take place as scheduled along with the raffle and BBQ.**

### 6. EQUIPMENT AND ANGLING RULES

Only legal methods of sport fishing are permitted which may include rods and reels as well as hand lines. The use of spotter planes is not permitted.

No team during the fishing hours entered in any of the tournaments may be involved in the handing off or receiving of anything from another vessel whether that vessel is entered in the tournament or not, this excludes bait receivers. In the event of an emergency in which the personal safety of someone or property is at risk this rule does not apply and any action necessary can be taken to protect or preserve life or property.

### 7. FISH HANDLING

All tuna must be properly bled and iced with the following best practices

Adequate bleeding upon landing by using best practices

Proper icing of fish to insure adequate chilling

Any fish determined to not be bled or iced properly at the weigh in will be disqualified from official team weight

All fish from the winning teams will be reviewed a second time by the fillet team via the official band.

Any fish deemed to be improperly cared for, or with anything foreign introduced will lead to disqualification of the team and forfeiture of prizes.

### 8. TEAM/CREW

A team consists of up to six (6) anglers on the boat fishing. Charters cannot have more than 6 event participants per each vessel. Multiple teams may participate on one vessel as long as there are no more than 6 total event participants per vessel. Each team must fly the 2010 OTC tournament flag so as to be visible.

## 9. CHECK IN

All teams must be across the predetermined finish line and must check in via the pre assigned VHF frequency at or before 4:00pm. No team may check in until they have crossed the finish line.

Any team that either does not check in or does not cross the finish line before 4:00pm will not be able to qualify for the purse but may still donate their fish to the OTC.

There are no exceptions.

## 10. FISH WEIGH-IN

Teams will line up in the order they checked in with tournament control.

The official weigh in scale opens at 2:00pm. The fish are weighed to the hundredth of a pound.

A total of the five (5) heaviest fish will be accepted at the official weigh in station and must be accompanied by a team member to verify the weight.

All fish must be tagged with an official OTC band that is supplied to each team at the captains meeting.

All donated fish will become the property of the OTC.

In the event another species of tuna is caught it may be used as part of the total weight and does not have to be donated.

All fish will be bled upon landing and will be packed in ice until they are received for weigh in.

Mutilated fish will not be accepted or weighed.

Any participant requesting a fish to be reweighed must do so at the time the fish in question is being weighed. The final decision will be determined by the weigh master.

## 11. TOURNAMENT AWARDS

Cash awards are based on the following:

Heaviest 5 fish ..... \$3,000.00

2<sup>nd</sup> Heaviest 5 fish...\$2,000.00

3<sup>rd</sup> Heaviest 5 fish...\$1,000.00

Largest Fish Jackpot entry is \$50.00 per boat...50% paid out per each event.

Pelagic Jackpot entry is \$50.00 per boat ...50% paid out per each event.

Pelagic is defined as Blue Fin Tuna, Big Eye Tuna, Yellow Fin Tuna, Yellowtail Jack, Marlin or Swordfish.... **NO SHARKS**

## 12. TIE BREAKER

In the event that two or more teams aggregate weight are the same the winner will be determined by the heaviest single fish from each team. In the event there is still a tie the second heaviest fish will then be used, then the third and so on.

## 13. POLYGRAPH ACCEPTANCE

The Executive Committee reserves the right to require any participant to a polygraph examination and by registering to compete in any event the registered participant agrees to submit to a polygraph. Failure to either take a polygraph and or the failure of the polygraph will disqualify the applicant and at the discretion of the Executive Committee reserve the right to disqualify the entire team.

All prizes, prize money, including the entry fee, will be forfeited and the participant and or team will be refused entry to all future OTC events.

## 14. PROTESTS

Any protest must be submitted to the Chairman before 6:00pm on the day of the event. The Executive Committee will rule as soon as feasible and if needed will use a polygraph to reach a decision. By submitting a protest and being a registered participant you agree to the final decision of the Executive Committee.

## 15. WAIVER

All participants, anglers, crews and guests must sign a waiver before participating in any events.

## 16. DISPUTES

Any and all disputes, protests, claims both in writing and verbal arising out of, or in relation to any events associated with the OTC shall be decided by the Executive Committee and shall be final and binding.

## 17. ETHICS and CONDUCT

Each participant agrees to conduct themselves with honesty and integrity during all facets of the tournament including events prior to, and after the fishing portion. Any unethical or illegal conduct will result in disqualification from the event, and possibility of elimination from future events.





## RELEASE WAIVER

***This waiver must be signed by each member of a participating team***

The undersigned voluntarily will be participating in an Oregon Tuna Classic Tuna Tournament event(s). It is recognized that this is a not for profit volunteer event, and that each individual participating in the event is totally responsible for his own conduct and safety. It is further recognized that any volunteer or individual who participates in the organization of the event has no liability for the safety or the conduct of any participant. Each participant recognizes that there are risks and dangers involved in offshore fishing, including the risk of injury and drowning as the result of being on open water in the bay or ocean. Each individual assumes this risk and responsibility and each participant will wear a life jacket or similar flotation devise for his/her own safety. The undersigned hereby releases and discharges any other participant from any liability, claim, loss or damage of any kind or nature arising out of or relating to the undersigned's participation in this fishing tournament(s) and specifically waives any right or claim which the undersigned may have against any other participant for any injuries, including loss of life, to the undersigned participant. It is further recognized that any fee paid is solely and exclusively for covering costs of prizes, donations, food and beverage associated with said tournament (s) and for no other purpose.

**After signing please fax to: 503-223-4595**

Date: \_\_\_\_\_

Printed : \_\_\_\_\_ Signed \_\_\_\_\_

Team Name: \_\_\_\_\_

**Sponsors Page**



**2010**

**TOURNAMENT SERIES**

BROUGHT TO YOU BY:

**RON BROCKMANN**





2010

TOURNAMENT SERIES

BROUGHT TO YOU BY:

RON BROCKMANN

541-758-3333



Northwest Topshots  
Serious tackle for the serious angler

